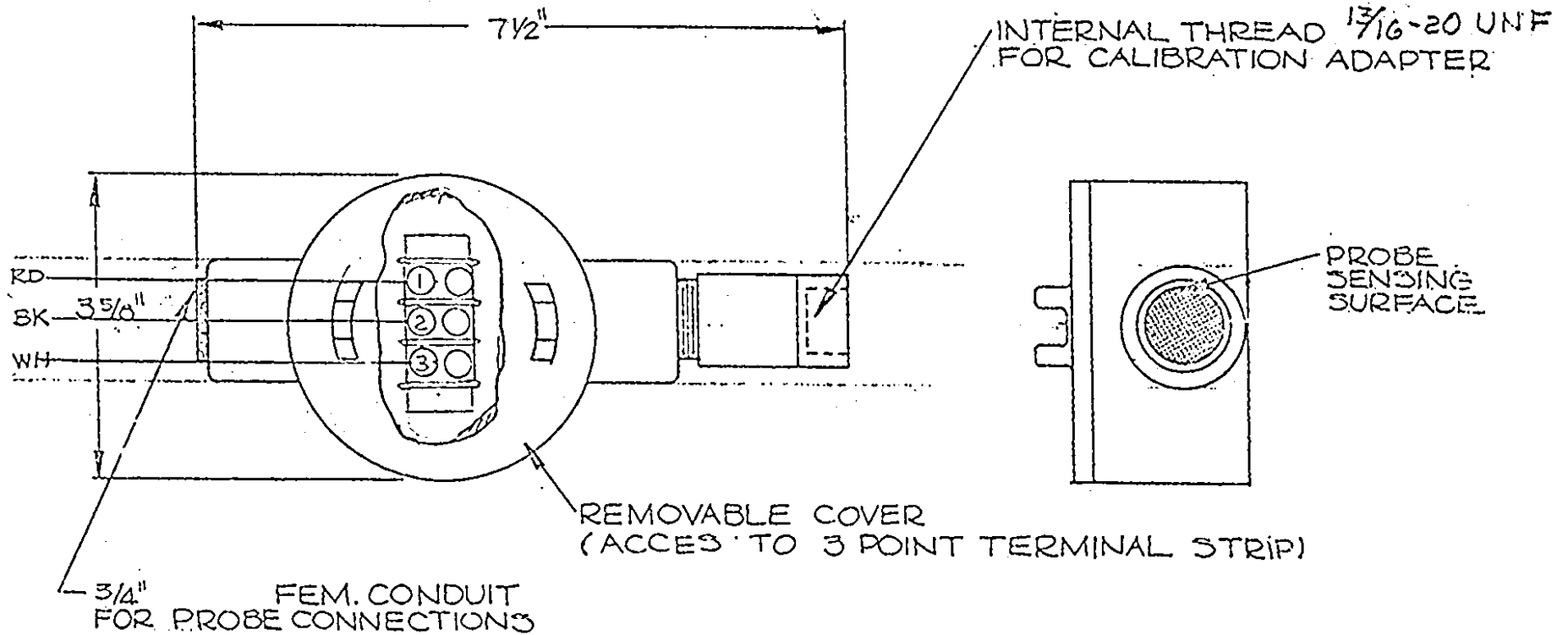


REVISIONS

REV	DESCRIPTION	DATE	APPROVED
4	DELETED 1/2" COND. CALL OUT	9-28-82	J. Chernick
5	ECO# 94-485	8-26-94	JLT



ITEM	QTY	PART NO.	DESCRIPTION				
BILL OF MATERIAL							
DO NOT SCALE DWG		THIS DRAWING IS THE PROPERTY OF TELEDYNE BROWN ENGINEERING ANALYTICAL INSTRUMENTS AND CONTAINS CONFIDENTIAL INFORMATION. IT IS NOT TO BE LOANED, REPRODUCED OR USED WITHOUT WRITTEN PERMISSION.					
TOLERANCE UNLESS OTHERWISE SPECIFIED: ANGULAR ± 1/2		TELEDYNE BROWN ENGINEERING Analytical Instruments CITY OF INDUSTRY, CALIFORNIA 91748					
LINEAR { <table style="display: inline-table; vertical-align: middle;"> <tr><td>X</td><td>±.1</td></tr> <tr><td>XX</td><td>±.02</td></tr> <tr><td>XXX</td><td>±.005</td></tr> </table>				X	±.1	XX	±.02
X	±.1						
XX	±.02						
XXX	±.005						
SIGNATURES		DATE	TITLE				
DSGN: JLT CHK: ENGR: JLT APPR: JLT		6-18-75	REMOTE COMBUSTIBLES PROBE OUTLINE & INTERCONN. DIAGRAM P/N A-12431, SUITABLE FOR CLASS I DIV I GROUPS B, C & D				
N/A-12431		S.O.:	MATL.				
NEXT ASSY		MODEL	DWG NO. A-13450				
		CAD I.D.	REV 5				

N/A-12431	
NEXT ASSY	MODEL

SCALE 1:2
 SW
 SHEET 1 of 1