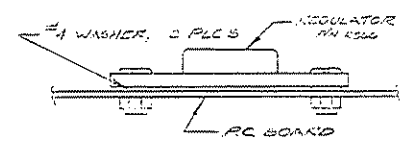
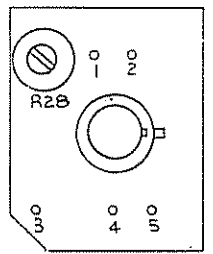


- NOTE! CEMENT 4 #6 FIBERWASHERS TO BACKSIDE OF P.C. BOARD



P.C.B A:13401 PLUG-IN DETAIL



INSTALL P.C. BOARD A:13401 PIN 1 INTO HOLE 1, PIN 2 INTO HOLE 2, PIN 3 INTO HOLE 3, PIN 4 INTO HOLE 4 AND PIN 5 INTO HOLE 5

SEE PLUG-IN DETAIL

- NOTES: 1. CIRCUITRY SHOWN IS ON REAR SIDE OF BOARD  
 2. FOR SCHEMATIC REFER TO C-41256  
 3. R15 & R16 ARE SELECTED PER APPLICATION-SEE INSTRUMENT RECORD SHEET.  
 4. SPACE C7 1/8" OFF BOARD

△ REMOVE PIN #3 BEFORE INSTALLING.

34	-	-	1	NUT, # 4-40
35	-	-	1	SCREW, #4-40, 1/4 LG.
32				
31	P214	-	1	PAD, TRANSISTOR, 3 PINS
30	S224	-	1	SOCKET, AMPLIFIER, 8 PINS
29	T261	Q12	1	TRANSISTOR, U1897E
28			1	LOCKWASHER #4
27			1	INTERNAL TOOTH WASHER #4
26	P100	R26	1	TRIM POT, 10K
25	P107	R18	1	TRIM POT, 5K
24	R310	R23	1	RESISTOR, M.F., 1K, 1/8W, 1%
23	R718	R21	1	RESISTOR, M.F., 5.62K, 1/8W, 1%
22	A495	R19	1	RESISTOR, M.F., 121K, 1/8W, 1%
21	A406	R17	1	RESISTOR, M.F., 7.5K, 1/8W, 1%
20	SEE NOTE 3	R16	1	RESISTOR
19	SEE NOTE 2	R15	1	RESISTOR
18			1	GROUND LUG
17	R570	R1, R2	2	RESISTOR, 20.2, 1/2W
16	Z 29	ZD3	1	ZENER DIODE, #1N821, 12V
15				
14				
13				
12	589	D1, D2, D3, D4	4	DIODE, 1N4004
11	C242	C8	1	CAPACITOR, SEI, .4 uF, 100V, 20%
10	C199	C5, C6, C7	3	CAPACITOR, 47 uF, 25V
9				
8				
7				
6				
5	R566		1	REGULATOR
4	C212	C1, C2, C3, C4	4	CAPACITOR, 220 uF, 40V
3	A19	A2	1	I.C. 741CE
2	A2422V		1	PLUG-IN AMPLIFIER P.C.B. ASSY.
1	C-13222		1	P.C. BOARD I.D. DETAIL

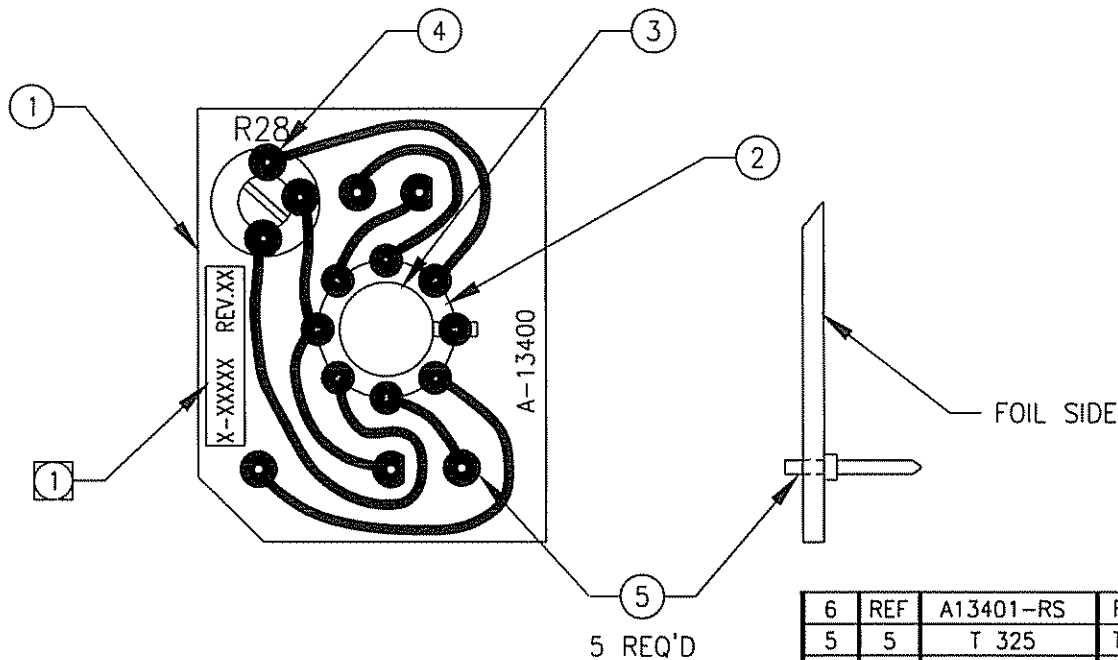
(SEE DETAIL)

THIS DRAWING IS THE PROPERTY OF TELETYPE ANALYTICAL INSTRUMENTS AND CONTAINS CONFIDENTIAL INFORMATION. IT IS NOT TO BE REPRODUCED OR USED WITHOUT WRITTEN PERMISSION.			
TOLERANCES UNLESS OTHERWISE SPECIFIED	FRACTION 2/104	DEC 2 008	ANGULAR ± 1/16"
<b>TELETYPE ANALYTICAL INSTRUMENTS</b> 5000 GARDEN CALIFORNIA		SCALE 2:1	DATE 10-16-80
TRACE OXYGEN ANALYZER MDL 325		MATERIAL AS NOTED	
P.C. BOARD ASSEMBLY		FINISH	
		DR. REV. 1 ENGR. APP.	C-24823

NOTES: UNLESS OTHERWISE SPECIFIED

① PRINT ASSEMBLY NUMBER AND CURRENT REVISION ON A LABEL.

REVISIONS				
REV	DESCRIPTION	DATE	APP.	REV. BY
5	INC. ECO# 84-0131	10-30-84	R.H.A.	--
6	INC. ECO# 97-0249	5-9-97	A.A.	M.V.



**HISTORY**  
**ECO# 04-0033**  
**04/05/04**

ITEM	QTY	PART NO	DESCRIPTION
6	REF	A13401-RS	ROUTE SHEET
5	5	T 325	TERMINAL PIN
4	1	P 100	TRIM POT, 10K (R28)
3	1	A 205	I.C. (A1)
2	1	S 224	SOCKET, 8 PIN
1	1	A-13400	P.C. BOARD ID DETAIL

BILL OF MATERIAL

DO NOT SCALE DWG

TOLERANCE UNLESS OTHERWISE SPECIFIED: ANGULAR ±1/2°

LINEAR  $\begin{cases} X & = \pm 1 \\ XX & = \pm .02 \\ XXX & = \pm .010 \end{cases}$

THIS DRAWING IS THE PROPERTY OF TELEDYNE ANALYTICAL INSTRUMENTS AND CONTAINS CONFIDENTIAL INFORMATION. IT IS NOT TO BE COPIED, REPRODUCED OR USED WITHOUT WRITTEN PERMISSION.

**Teledyne Analytical Instruments**  
 A business unit of Teledyne Electronic Technologies  
 CITY OF INDUSTRY, CALIFORNIA 91748

S/	SIGNATURES	DATE
N/	DRFT: <i>Martinez</i>	5/8/97
P/	CHK: V. FIGUEROA	5/8/97
I/	APPR: P. QUAY	9-16-83
F/	ENGR: PHILLIP QUAY	
O/	S.O.:	
REFERENCE	CAD I.D. A13401-6	

TITLE	SCALE
ASSY, P.C. BOARD PLUG-IN AMPLIFIER FOR C8932 P.C. BOARD	----
	SIM A-33900
	SHEET 1 OF 1
MATL - LISTED -	DWG NO <b>A-13401</b>
	REV <b>6</b>