
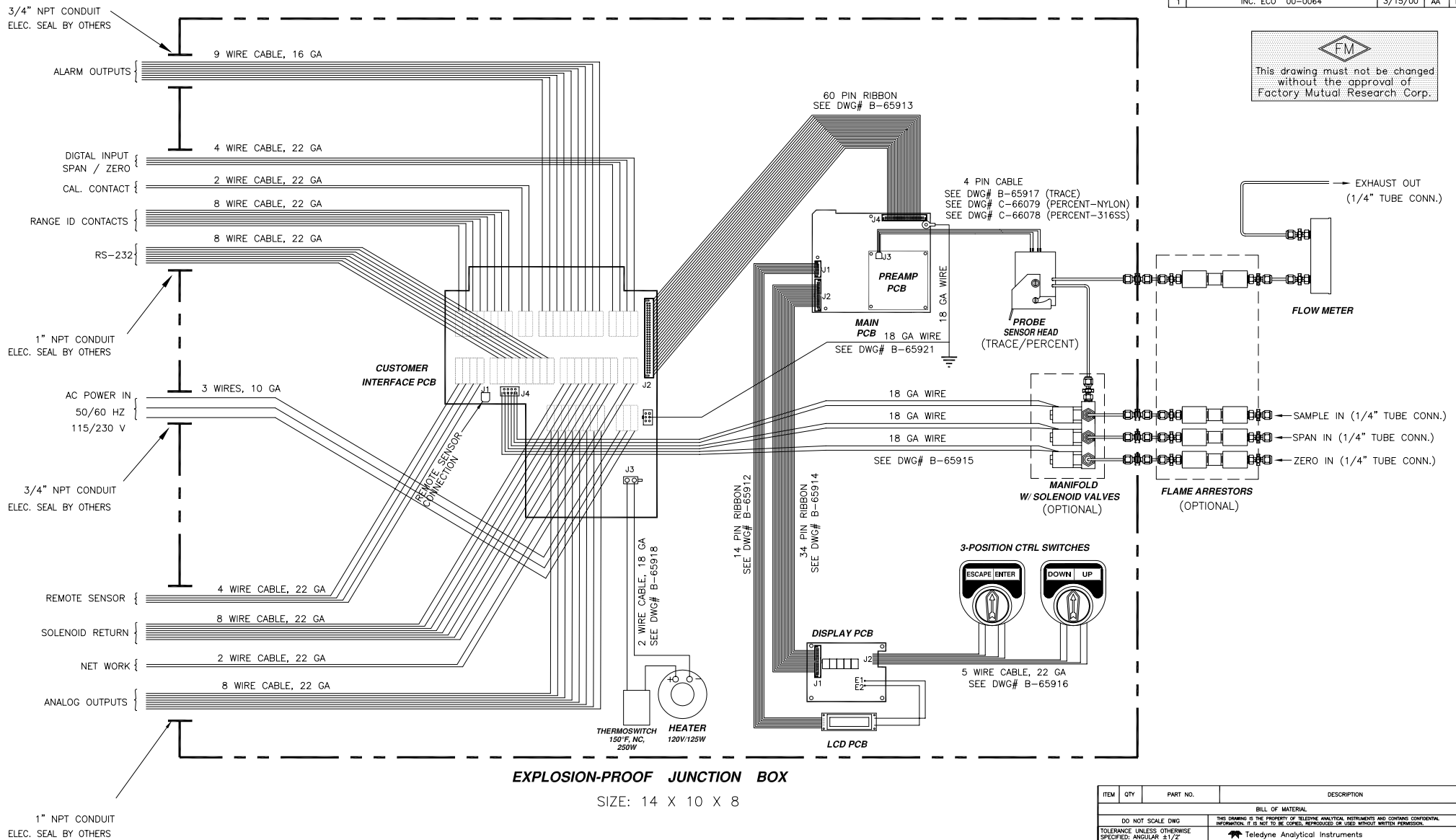


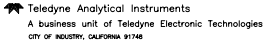
NOTES: UNLESS OTHERWISE SPECIFIED.

REVISIONS				
REV	DESCRIPTION	DATE	APP.	REV. BY
0	Initial Release 96-250	4-9-96	S.B.	BT
1	INC. ECO 00-0064	3/15/00	AA	DC


 This drawing must not be changed
 without the approval of
 Factory Mutual Research Corp.



INTERCONNECTION DIAGRAM --- MDL 3020

ITEM	QTY	PART NO.	DESCRIPTION
BILL OF MATERIAL			
DO NOT SCALE DWG			
TOLERANCE UNLESS OTHERWISE SPECIFIED: ANGULAR ±1/2"			
LINEAR .3 = ±.1			
.XX = ±.02			
.XXX = ±.010			
THIS DRAWING IS THE PROPERTY OF TELEDYNE ANALYTICAL INSTRUMENTS AND CONTAINS CONFIDENTIAL INFORMATION. IT IS NOT TO BE COPIED, REPRODUCED OR USED WITHOUT WRITTEN PERMISSION.			
 Teledyne Analytical Instruments A business unit of Teledyne Electronic Technologies CITY OF INDUSTRY, CALIFORNIA 91746			
SIGNATURES	DATE	TITLE	SCALE ---
DWGT: BT	1-22-96	INTERCONNECTION DIAGRAM	---
CHK: D-65910		OXYGEN ANALYZER	SIM
APPR: D-65900		MODEL 3020	SHEET 1 OF 1
ENGR: P/			REV
C.O. F/			1
REFERENCE	CAD ID D65910-1	DWG NO. D-65910	REV