

NOTES: UNLESS OTHERWISE SPECIFIED.

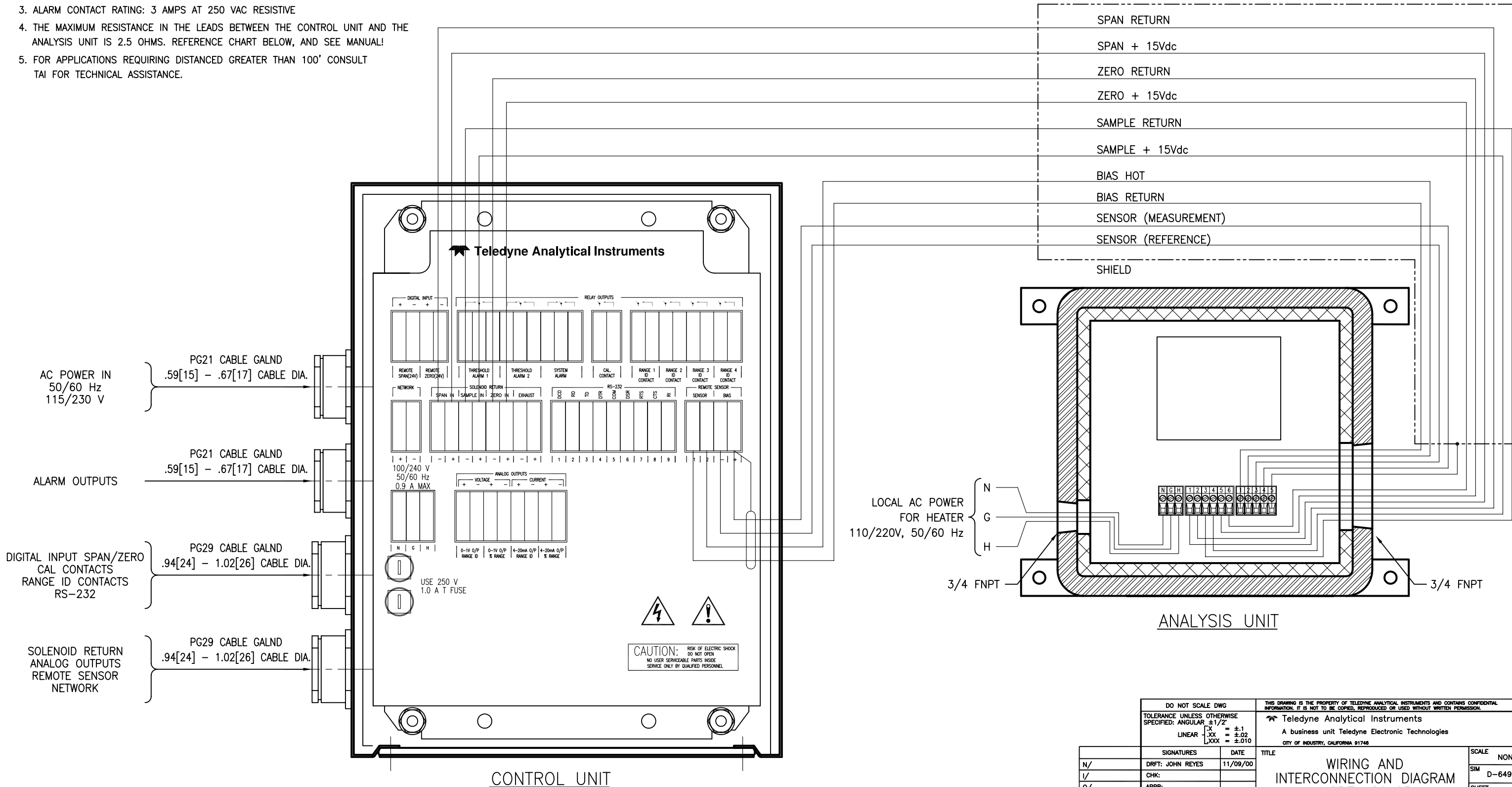
- DO NOT GROUND EITHER OUTPUT SIGNAL LEADS GROUND SHIELD AT THE ANALYSIS UNIT
- WIRE RECOMMENDATIONS:  
 SENSOR SIGNAL: 22 GA (MIN.) SHIELDED CABLE,  
 SOLENOID CONTROL SIGNALS: 22 GA (MIN), MAX. LENGTH OF 22 GA 1000 FT.  
 SEE THE FOLLOWING CHART FOR ALTERNATIVE WIRE GA.

WIRE GAUGE	MAX. LENGTH FOR SENSOR	MAX. LENGTH FOR SOLENOID
22	156 FT	1000 FT
20	242 FT	1750 FT
18	358 FT	2500 FT
16	585 FT	4000 FT

POWER AND GROUND: 16 GA MIN

- ALARM CONTACT RATING: 3 AMPS AT 250 VAC RESISTIVE
- THE MAXIMUM RESISTANCE IN THE LEADS BETWEEN THE CONTROL UNIT AND THE ANALYSIS UNIT IS 2.5 OHMS. REFERENCE CHART BELOW, AND SEE MANUAL!
- FOR APPLICATIONS REQUIRING DISTANCED GREATER THAN 100' CONSULT TAI FOR TECHNICAL ASSISTANCE.

REVISIONS				
REV	DESCRIPTION	DATE	APP.	REV. BY
0	INITIAL RELEASE	11/20/00	A.A.	---



AC POWER IN  
50/60 Hz  
115/230 V

PG21 CABLE GALND  
.59[15] - .67[17] CABLE DIA.

ALARM OUTPUTS

PG21 CABLE GALND  
.59[15] - .67[17] CABLE DIA.

DIGITAL INPUT SPAN/ZERO  
CAL CONTACTS  
RANGE ID CONTACTS  
RS-232

PG29 CABLE GALND  
.94[24] - 1.02[26] CABLE DIA.

SOLENOID RETURN  
ANALOG OUTPUTS  
REMOTE SENSOR  
NETWORK

PG29 CABLE GALND  
.94[24] - 1.02[26] CABLE DIA.

LOCAL AC POWER  
FOR HEATER  
110/220V, 50/60 Hz

N  
G  
H

ANALYSIS UNIT

CAUTION: RISK OF ELECTRIC SHOCK  
DO NOT OPEN  
NO USER SERVICEABLE PARTS INSIDE  
SERVICE ONLY BY QUALIFIED PERSONNEL

DO NOT SCALE DWG		THIS DRAWING IS THE PROPERTY OF TELEDYNE ANALYTICAL INSTRUMENTS AND CONTAINS CONFIDENTIAL INFORMATION. IT IS NOT TO BE COPIED, REPRODUCED OR USED WITHOUT WRITTEN PERMISSION.	
TOLERANCE UNLESS OTHERWISE SPECIFIED: ANGULAR ±1/2°		Teledyne Analytical Instruments A business unit Teledyne Electronic Technologies CITY OF INDUSTRY, CALIFORNIA 91748	
LINEAR .XX = ±.1 .XXX = ±.02 XXXX = ±.010		SCALE NONE	
SIGNATURES	DATE	TITLE	SIM D-64949
N/ DRFT: JOHN REYES	11/09/00	WIRING AND INTERCONNECTION DIAGRAM MODEL 2010B	SHEET 1 OF 1
I/ CHK:			
O/ APPR:			
P/ ENGR: ANGEL ALEGRIA			
F/ C.O.: STANDARD		MATL. NOTED	DWG NO. D-73170
REFERENCE	CAD ID D73170-0		REV 0