

# Quick Start Guide for Model AD300 Portable Oxygen Analyzer and MD300 Portable Oxygen Monitor

The Quick Start Guide describes the steps to successfully start and calibrate the instrument. This guide covers the AD/MD 300 series of analyzers and monitors. Before placing the instrument in service please read the users manual that accompanies the device.

## Components

The AD/MD 300 Portable Oxygen Analyzers include:

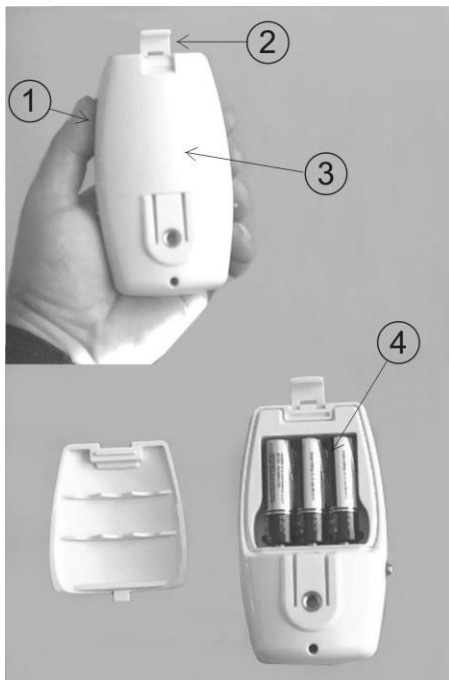
- Sensor & Flow Diverter
- Sensor Cable
- Inflator hose & T-Adapter
- V mount adapter
- AA Batteries
- Instruction Manual
- Rugged Storage Case with Handle



## Set Up

Set up is simple:

1. Connect the coiled sensor cable to the monitor and tighten the capture nut.
2. Connect the other end to the sensor and tighten the capture nut.
3. Install 3 AA alkaline batteries.



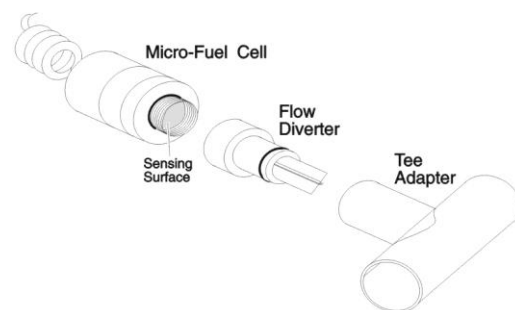
## Battery Installation

1. Hold the instrument face down.
2. Using a coin. Gently twist to open the hinged battery compartment door latch.
3. Lift up door near latch and pull out.
4. Install 3 AA alkaline batteries observing proper polarity.

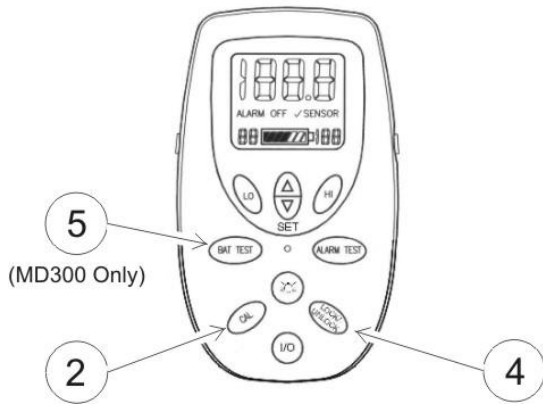
*Note: Depressing keys while installing batteries may activate an error code. To reset remove and replace battery.*

## Calibration

*Note: The AD300 and MD300 can only be calibrated using room air (20.9%) or 100 % oxygen. Improper calibration or use of other gas concentrations will activate the  $\sqrt{\text{SENSOR}}$  indicator.*



MADMD300QS  
6-23-10



1. After installing sensor & batteries the LCD will flash 00.0.
2. For air calibration expose the sensor to fresh outdoor air and press the CAL key. See instructions for other sampling methods.
3. The LCD will count down from 9 to 0. When the calibration is complete the LCD will display the gas value (20.9)
4. Press the LOCK/UNLOCK key to save the calibration data. The LCD will stop flashing.
5. Check the batteries by pressing the BAT TEST key. **(MD300 only)**
6. Using the supplied adapters connect sample line to gas source. Allow a small amount of gas to escape into the line. After 30 seconds shut off gas and note reading.

## Setting the Alarms (MD300 only)

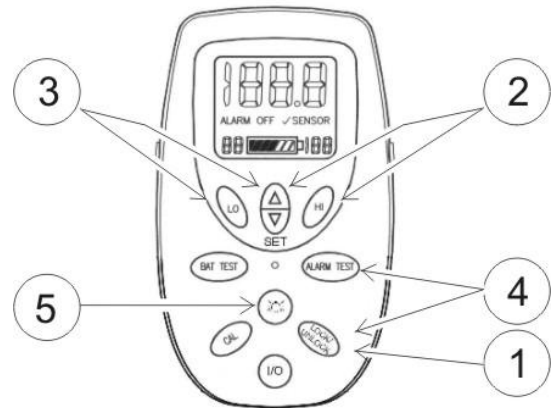
### HI Alarm

1. Unlock the control keys by pressing the LOCK/UNLOCK key. The display will flash.
2. Press the HI ALARM SET key once. Press the UP and DOWN arrow key until the desired value is displayed in the lower right corner. Press Lock key to save settings or proceed to Low alarm setting below.

*Note: The HI and LO alarms may be defeated by setting the HI alarm limit one step above 100%. The display will blink ALARM OFF continually in this mode.*

### LO Alarm:

3. Press the LO ALARM SET key once. (You may have to first unlock the keys using LOCK/UNLOCK). Press the UP and DOWN arrow key to select a value shown in the lower left corner. A built-in safety feature will not allow you to select a LO alarm value less than 18%. Press the Lock key to save settings.

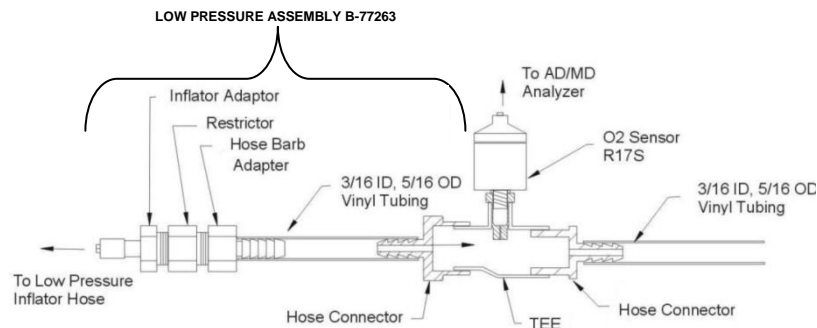


### Testing the Alarms:

4. To test the alarms, unlock the controls by pressing the LOCK/UNLOCK key and then press ALARM TEST key. The LO alarm followed by the HI alarm will blink and the audible visual alarm will activate for about 1 second. Press LOCK key for normal operation.
5. To silence the alarm buzzer for 115 seconds press the alarm silence key (🔇).

## Gas Sampling

1. Connect the inflator hose adapter supplied with the unit to the tee adapter.
2. Allow gas to flow for about 30 seconds.
3. When reading is stable shut off the gas.
4. Allow reading to settle for a few seconds. This is oxygen concentration



## Power OFF

To shut off the AD/MD300:

1. Press LOCK/UNLOCK to unlock keys and press I/O to turn off.