

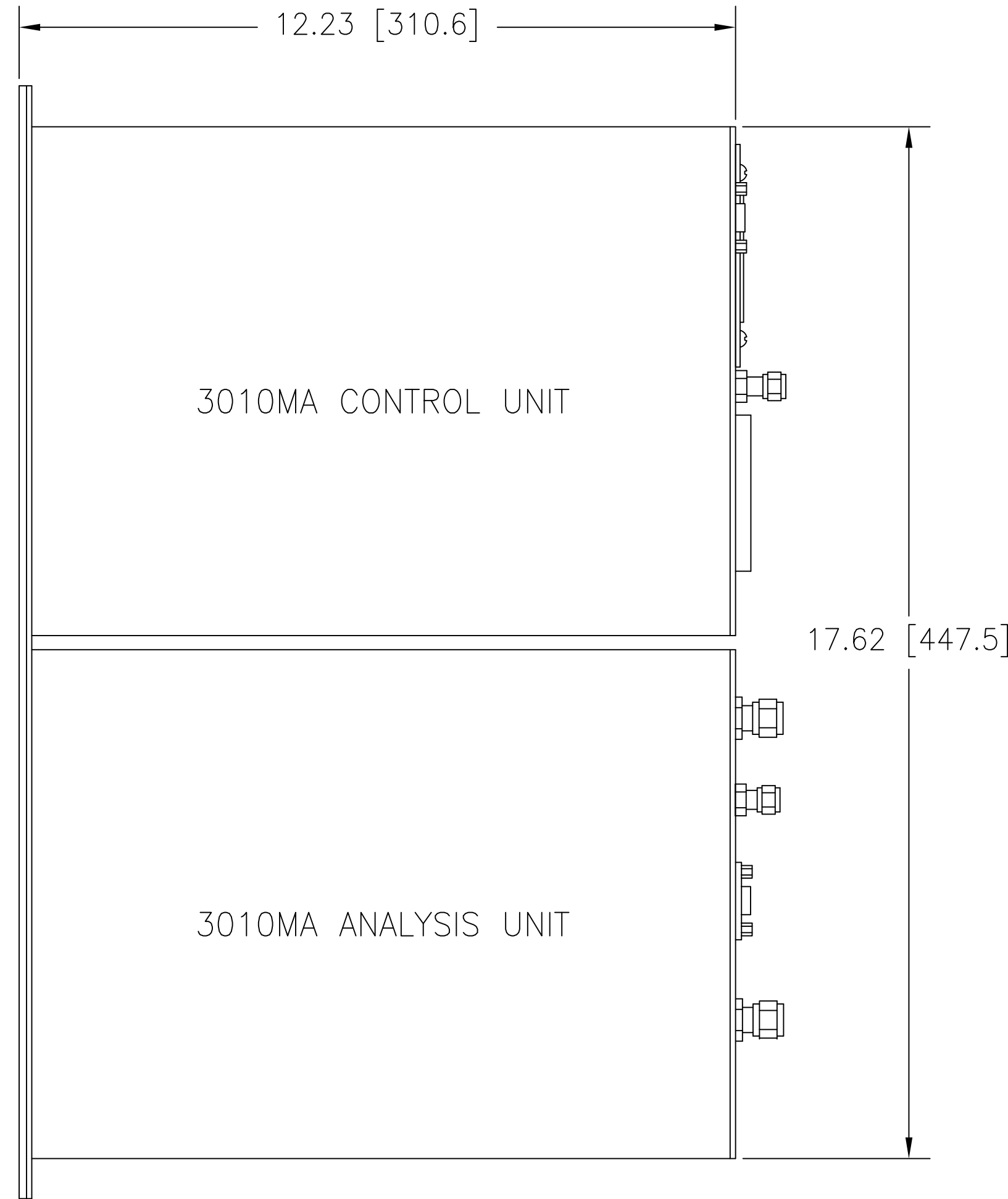
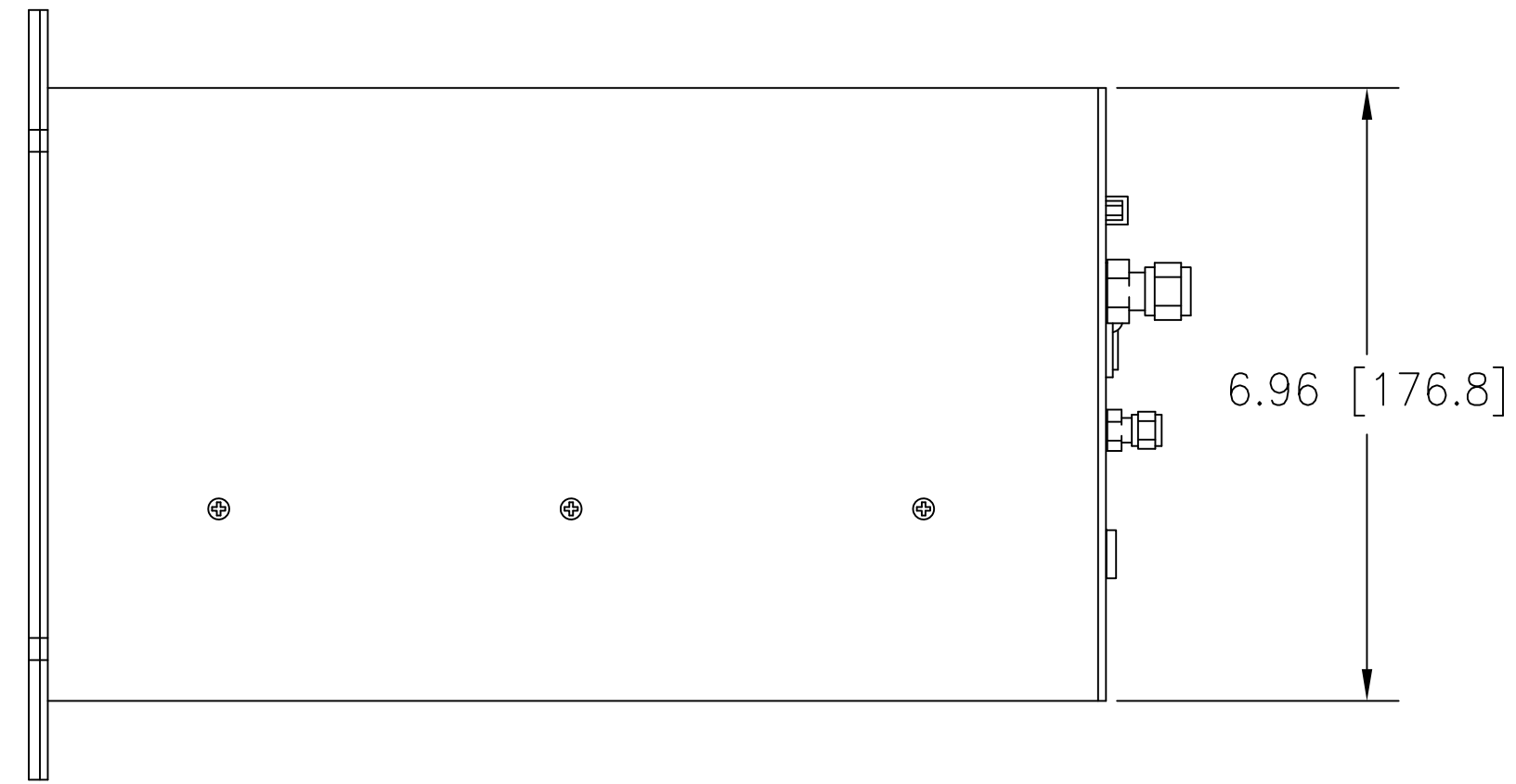
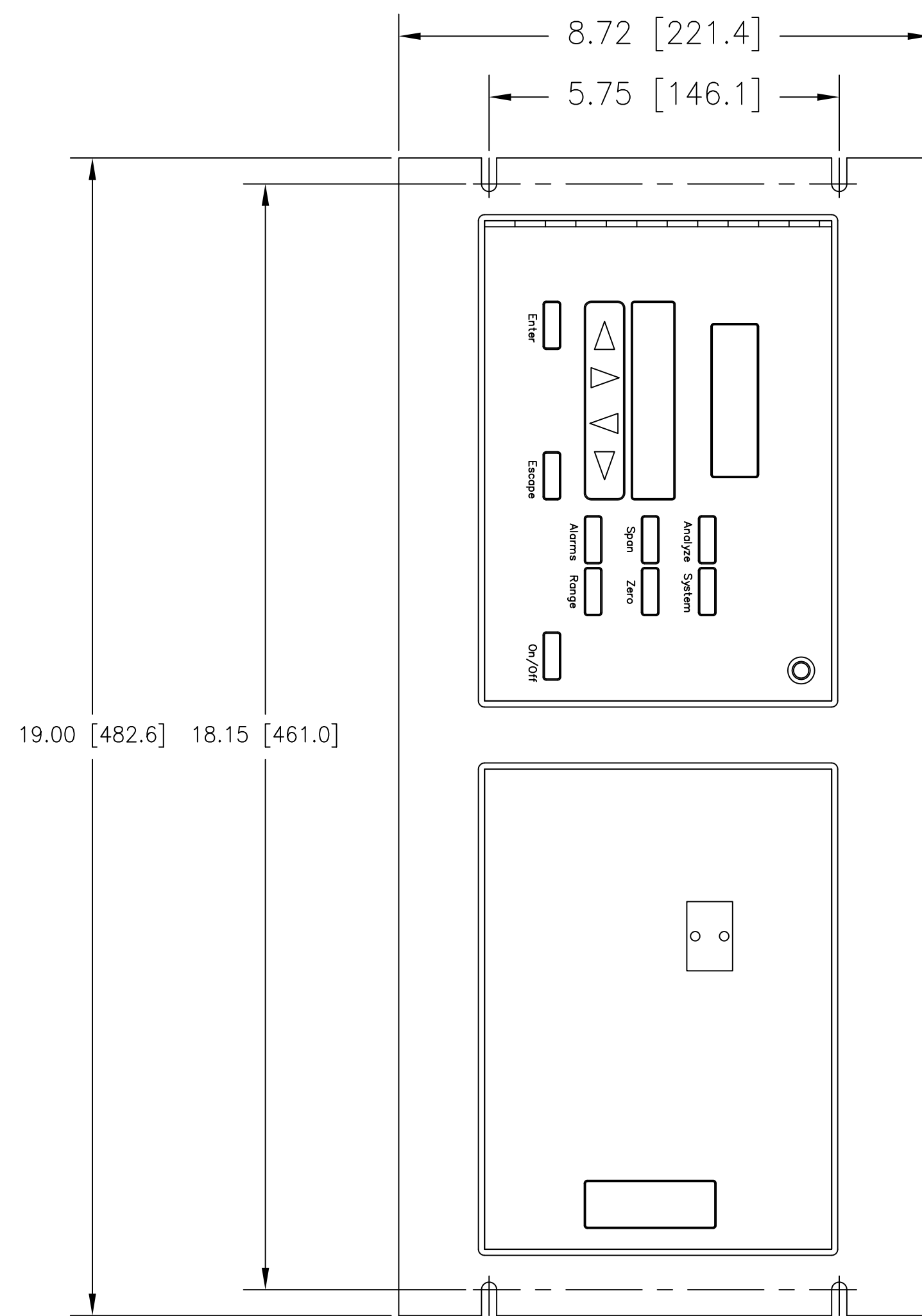
NOTES: UNLESS OTHERWISE SPECIFIED.

1. ALL DIMENSIONS ARE IN INCHES (±.06) AND MILLIMETERS (±1.) INCHES[mm]

REVISIONS				
REV	DESCRIPTION	DATE	APP.	REV. BY
1	RELEASE PER ECO 01-0155	05/29/01	K.F.P.	KFP
2	INC. ECO 04-0093	06/02/05	JR	MN

D
C
B
A

D
C
B
A



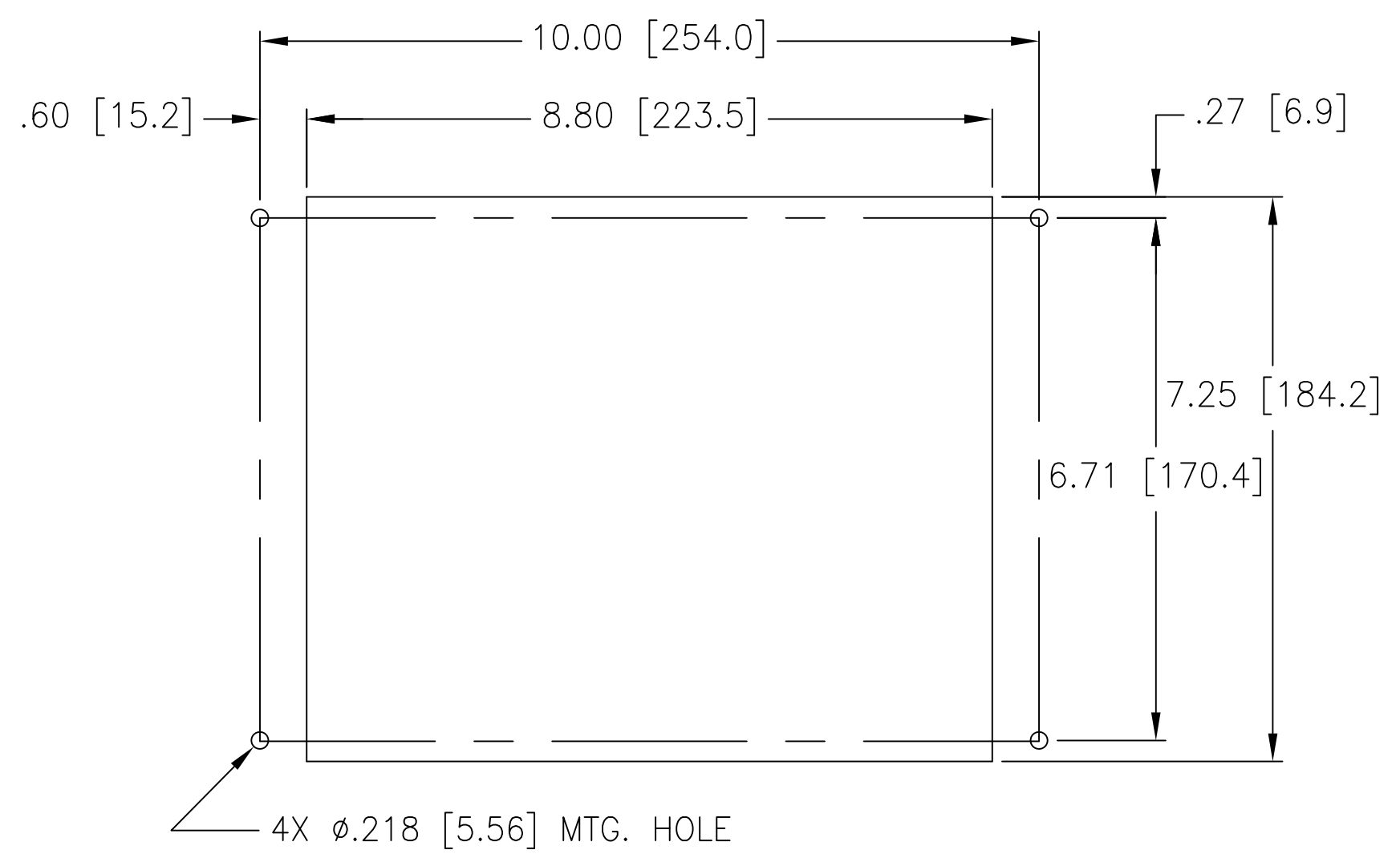
**19" RACK MOUNT OPTION
(SCALE: 1:2)**

Use and Disclosure of Data
Information contained herein is classified as EAR99 under the
U.S. Export Administration Regulations.
Export, reexport or diversion contrary to U.S. law is prohibited.

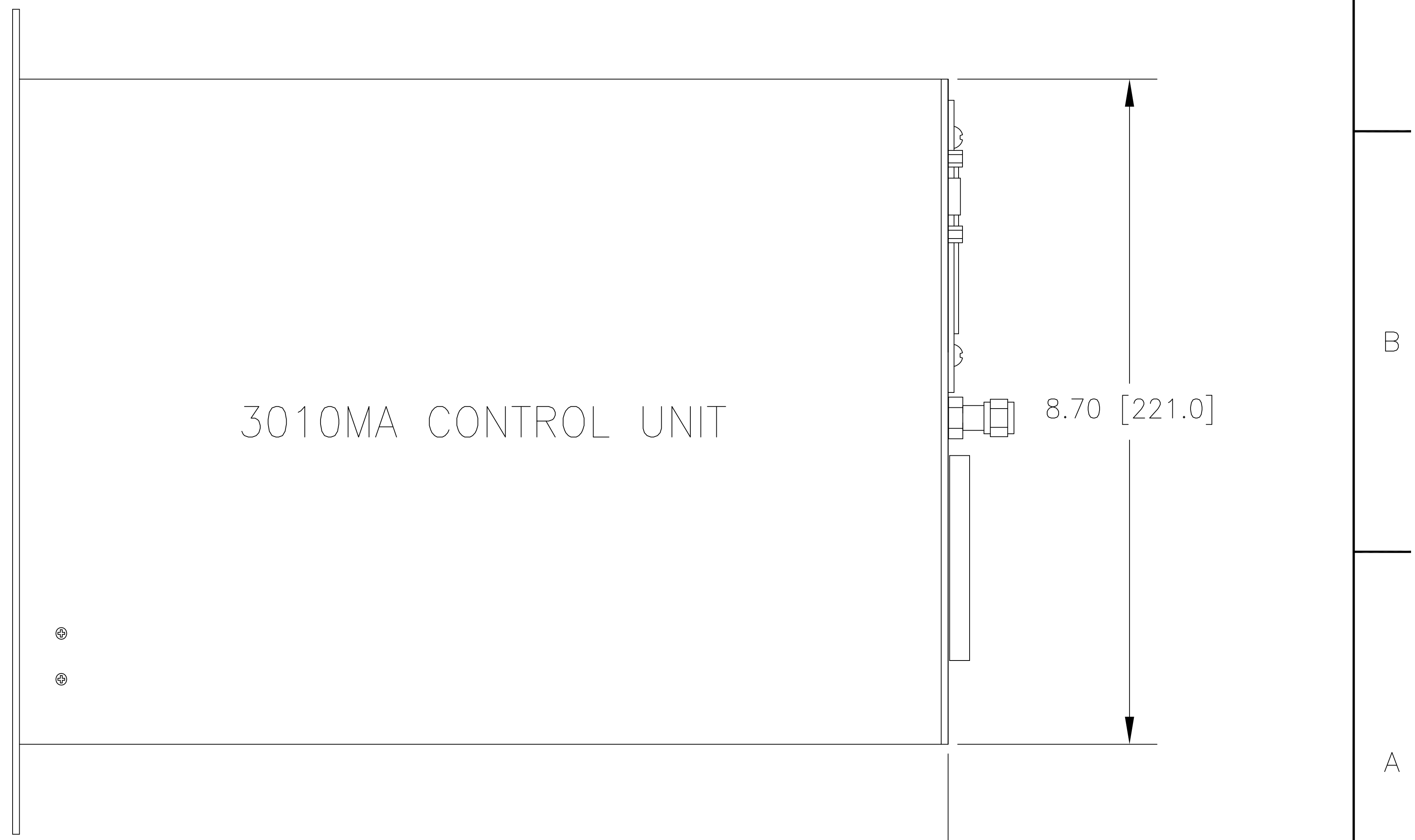
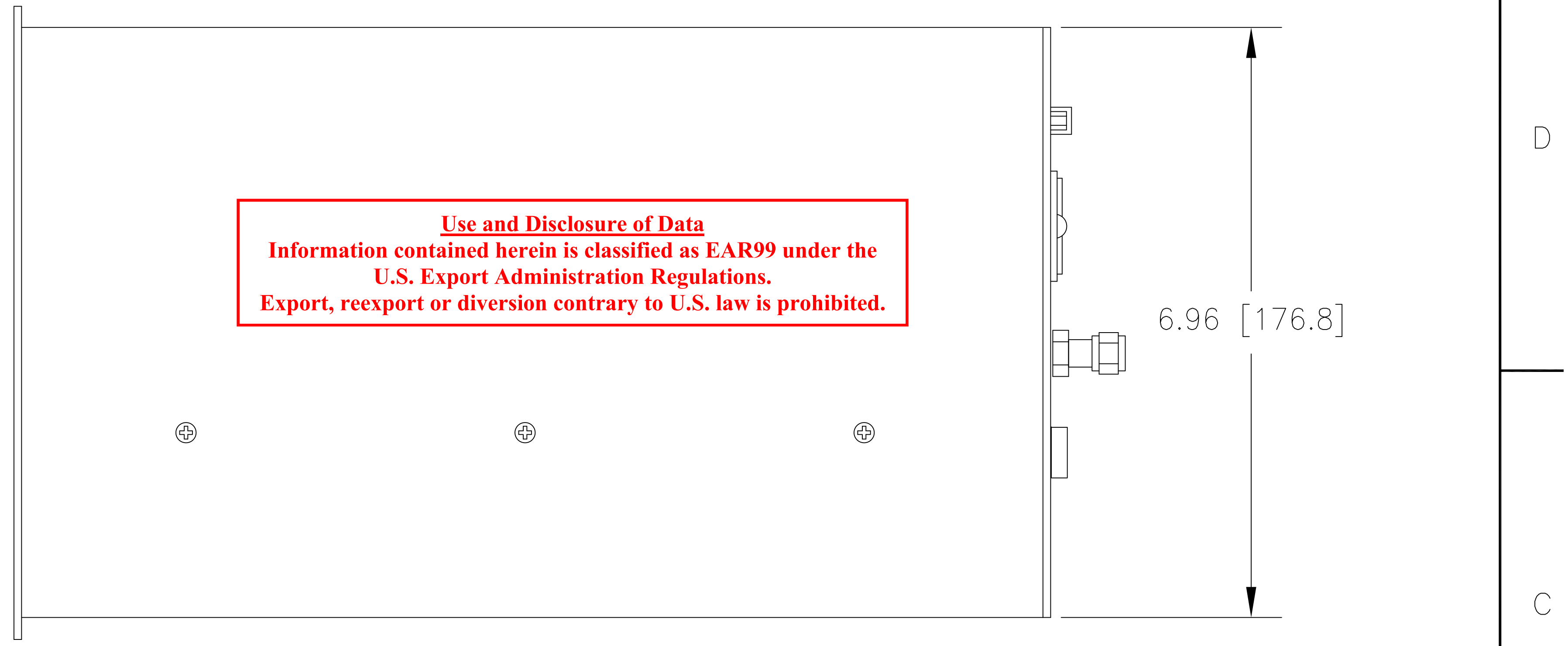
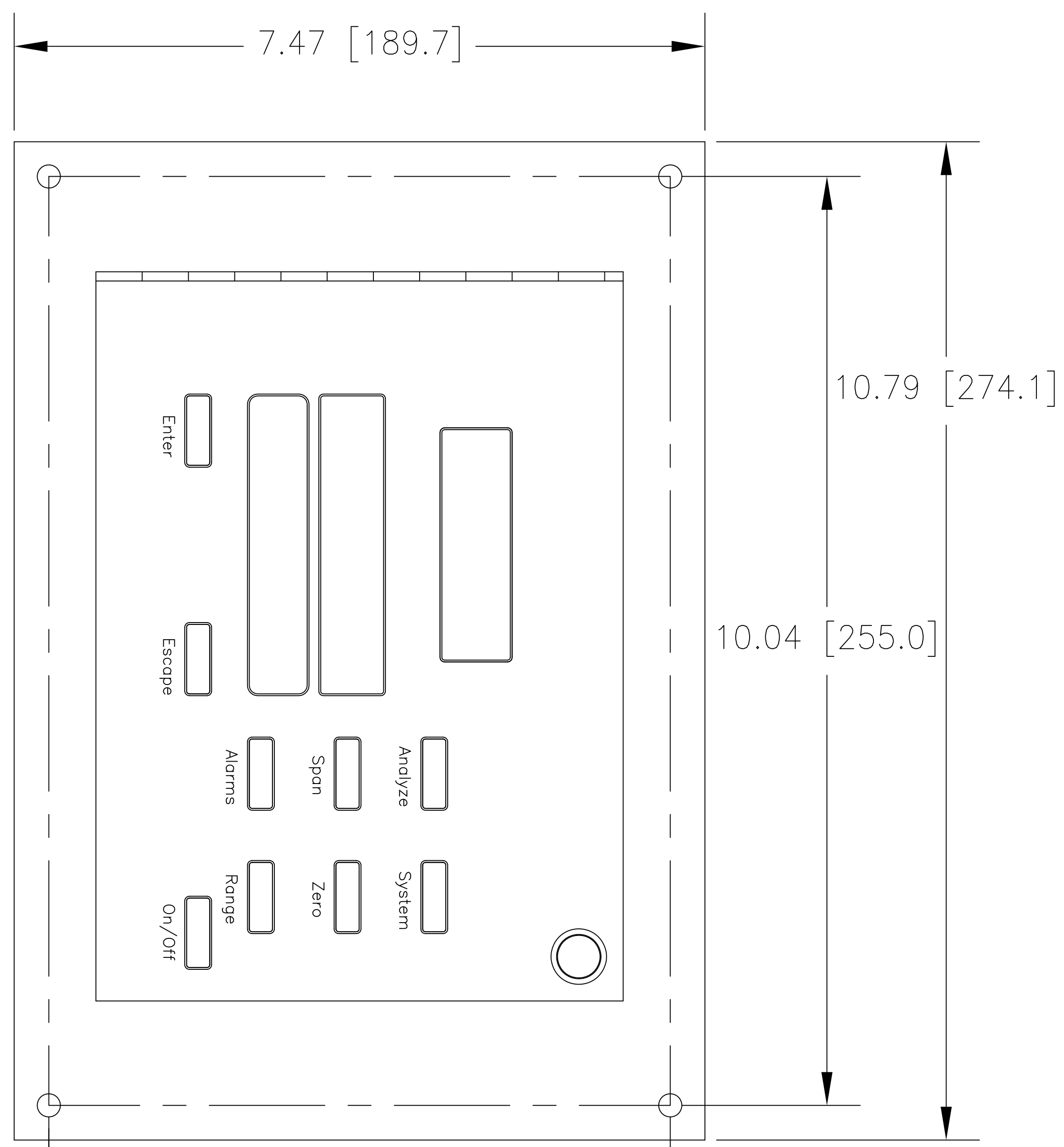
ITEM	QTY	PART NO.	DESCRIPTION
BILL OF MATERIAL			
DO NOT SCALE DWG		THIS DRAWING IS THE PROPERTY OF TELEDYNE ANALYTICAL INSTRUMENTS AND CONTAINS CONFIDENTIAL INFORMATION. IT IS NOT TO BE COPIED, REPRODUCED OR USED WITHOUT WRITTEN PERMISSION.	
TOLERANCE UNLESS OTHERWISE SPECIFIED: ANGULAR ±1/2°		 Teledyne Analytical Instruments A business unit of Teledyne Electronic Technologies CITY OF INDUSTRY, CALIFORNIA 91748	
LINEAR ±.XX = ±.02			
LINEAR ±.XXX = ±.010			
S/	SIGNATURES	DATE	TITLE
N/	DRFT: KFP	4/12/01	3010MA OUTLINE
V/	CHK:		
O/	APPR:		
P/ B73695	ENGR: KP		
F/ A73652	S.O. 28659		
REFERENCE	CAD ID D73635-2		
SCALE 1:1			SHEET 1 OF 3
DWG NO. D-73635			REV 2

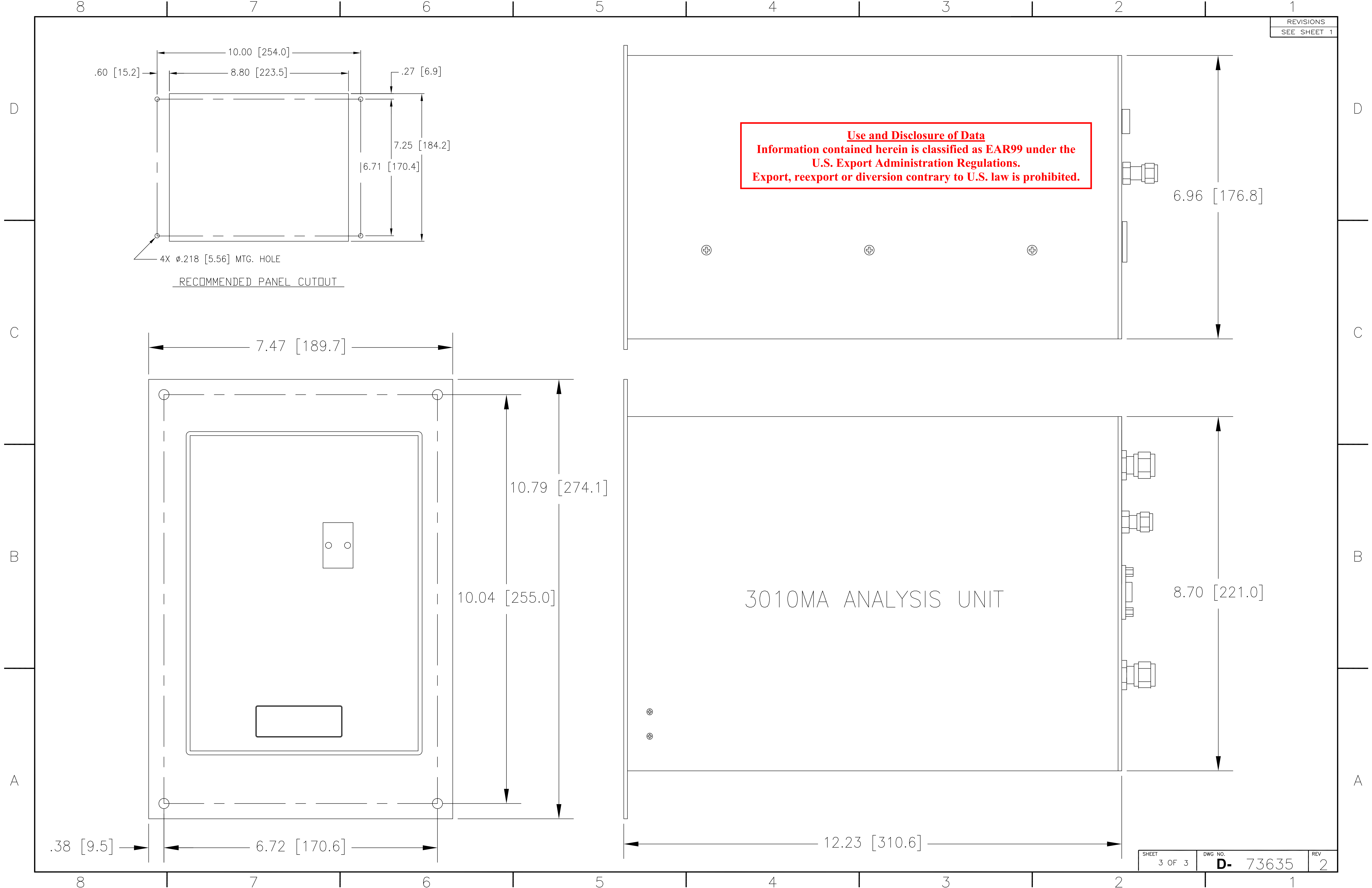
A

A



RECOMMENDED PANEL CUTOUT





Use and Disclosure of Data
Information contained herein is classified as EAR99 under the
U.S. Export Administration Regulations.
Export, reexport or diversion contrary to U.S. law is prohibited.

3010MA ANALYSIS UNIT

RECOMMENDED PANEL CUTOUT